

Access & Ramp ASSESSMENT GUIDE



Don't miss the **ALL NEW** products!



www.enable-access.com



Ramp Specifier Guide



Choosing the correct ramp is important, just like finding the right size shoe or the correct glasses. Please don't hesitate to give our experienced team a call if you need any assistance.

Choose your ramp type

Internal Steps/Thresholds	Steps/Stairs	Wood/Level Access Door Threshold	uPVC Door Threshold	Vehicle Access
doorline™-threshold wedge p13	Aerolight™ p4	Aerolight™ p4	Aerolight™-Up&Over p5	Aerolight™-Lifestyle p6
doorline™-variwedge p13	Aerolight™-High Rise p5	doorline™ p12	The Butterfly Ramp™ p12	Aerolight™-Broadfold p7
doorline™-neatedge p14	permaramp™ p18	permaramp™ p18	permaramp™-adjust p19	Aerolight™-Max p8
The Butterfly Ramp™ p12	NEW Welcome* p26	NEW Welcome* p26	NEW Welcome* p26	ultralight™-telescopic p17

Key icons



Suitable for all weathers



Compact Storage



Lightweight Solution



Look out for great tips



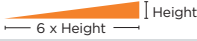
Leave-in-place



Fast install

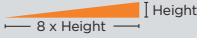
How steep?

1:6 (10°)*



Acceptable in some cases for short threshold ramps.

1:8 (7°)*



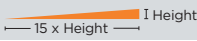
A useful balance between gradient and space suitable for portable ramps in some assisted applications and events, etc.

1:12 (5°)



Often required by social services and local authorities. Minimum required by Building Regulations Document M for installed ramps.

1:15 (4°)



Sometimes required by social services and local authorities for independent access but typically for installed public access ramps.

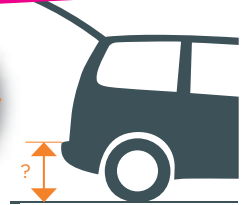
*Assess safety/risk

How long?

- a. Measure the step height/level difference.
(Total height of steps or height to resting point on vehicle).



Try the ramp gradient calculator on our website!



- b. Use the **Ramp Length Guide** Height x Gradient = Length Required

Height (up to)	Length		
	1:6	1:8	1:12
10cm (4ins)	60cm (2ft)	80cm (2ft 8ins)	120cm (4ft)
15cm (6ins)	90cm (3ft)	120cm (4ft)	180cm (6ft)
20cm (8ins)	120cm (4ft)	160cm (5ft 4ins)	240cm (8ft)
25cm (10ins)	150cm (5ft)	200cm (6ft 8ins)	300cm (10ft)
30cm (1ft)	180cm (6ft)	240cm (8ft)	360cm (12ft)
45cm (1ft 6ins)	270cm (9ft)	360cm (12ft)	540cm (18ft)
60cm (2ft)	360cm (12ft)	480cm (16ft)	720cm (24ft)

Select by height range



*Heights shown are based on 1:8 gradient.

rampCENTRE® Aerolight® Full-width portable ramps



So **VERSATILE**, So **EASY-TO-USE**,
So **QUICK TO DEPLOY**, So **SAFE**,
So **STRONG**, So **LIGHTWEIGHT!**

- ▶ Subtle reflective lip feature for increased safety in low-light situations
- ▶ Great for all types of wheelchairs, rollators and scooters (2, 3, 4, 5 and 6 wheel types)
- ▶ A full-width anti-slip surface provides excellent grip
- ▶ Available in different styles and sizes to suit your needs
- ▶ Unique tapered lip design to fit narrow doorways and allow seamless transition for bridging

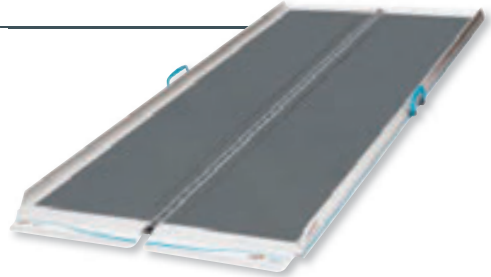
Aerolight®-Xtra Premium folding suitcase ramp



A proven and popular workhorse



Custom sizes available



- ▶ Folds and clips for convenient, compact storage
- ▶ Flat underneath for the best possible step clearance
- ▶ Very easy to carry and deploy
- ▶ Anti-slip surface folds inside when stored and carried for protection and safety
- ▶ Contrasting colour edge strip increases visibility

Code	Length	Capacity	Weight	Stored Dimensions L x W x D
Width: 76cm (30ins) (excluding handles). Lip width 71.4cm (28.1ins).				
AX6	60cm (2ft)	450kg (71st)	4.9kg (11lbs)	60 x 39 x 8cm (24 x 15 x 3ins)
AX9	90cm (3ft)	450kg (71st)	6.6kg (15lbs)	90 x 39 x 8cm (35 x 15 x 3ins)
AX12	120cm (4ft)	400kg (63st)	8.6kg (19lbs)	120 x 39 x 8cm (47 x 15 x 3ins)
AX15	150cm (5ft)	350kg (55st)	10.4kg (23lbs)	150 x 39 x 8cm (59 x 15 x 3ins)
AX18	180cm (6ft)	350kg (55st)	12.3kg (27lbs)	180 x 39 x 8cm (71 x 15 x 3ins)
AX21	210cm (7ft)	300kg (47st)	14.2kg (31lbs)	210 x 39 x 8cm (83 x 15 x 3ins)
AX24	240cm (8ft)	250kg (39st)	16kg (35lbs)	240 x 39 x 8cm (98 x 15 x 3ins)

High Rise Kits (See P5)	Code	Length	Capacity	Weight	Includes:
	HR30	300cm (10ft)	350kg (55st)		(2 x AX15 + 1 x AJ4)
	HR36	360cm (12ft)	350kg (55st)		(2 x AX18 + 1 x AJ4)
	HR42	420cm (14ft)	300kg (47st)		(2 x AX21 + 1 x AJ4)
	HR48	480cm (16ft)	250kg (39st)		(2 x AX24 + 1 x AJ4)

Aerolight® -High Rise

Aerolight® combinations up to 16ft long



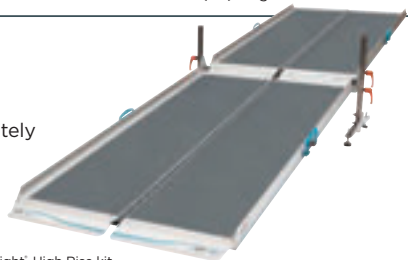
Achieve incredible lengths and heights with lightweight, portable ramps



- Fully adjustable for any height and gradient
- Ramp joining support (AJ4) is also available separately



Aerolight®-Xtra (page 4) AJ4 joining support Aerolight®-Xtra (page 4) Aerolight®-High Rise kit



Code	Includes	Length	Max Height at 1:8	Capacity
Width: 76cm (30ins) (excluding handles and joining support). Lip width 71.4cm (28.1ins)				
HR30	1 x AJ4, 2 x AX15	300cm (10ft)	37.5cm (15ins)	350kg (55st)
HR36	1 x AJ4, 2 x AX18	360cm (12ft)	45cm (18ins)	350kg (55st)
HR42	1 x AJ4, 2 x AX21	420cm (14ft)	52.5cm (21ins)	300kg (47st)
HR48	1 x AJ4, 2 x AX24	480cm (16ft)	60cm (24ins)	250kg (39st)

Code	Description	Height	Capacity	Weight
AJ4	Joining Support: includes easy-use handle fixings for height adjustment. Can be used with any Aerolight® ramps.	11-45cm (4-18ins)	350kg (55st)	4.7kg (10lbs)

For full product dimensions see individual component pages.

Aerolight® -Up&Over

Aerolight®-Xtra and threshold ramp combinations

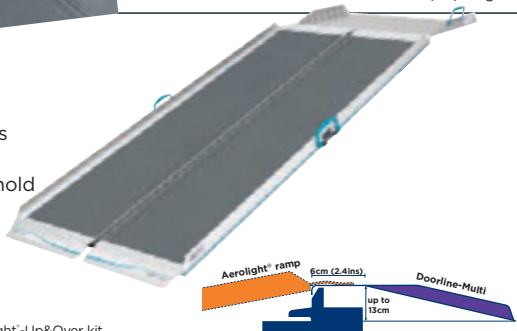


The complete up-and-over solution for thresholds - great for uPVC thresholds

- Versatile, quick and easy to deploy
- Solves most threshold types and heights
- Portable and easy to store
- Seamless transition right over the threshold



Aerolight®-Xtra (page 4) Doorline-Multi (page 12) Aerolight®-Up&Over kit



Code	Includes	External Ramp Length	Max Height at 1:8	Max. Recommended Internal Threshold Height	Capacity
UO12	1 x DM5, 1 x AX12	120cm (4ft)	15cm (6ins)	10cm (4ins)	300kg (47st)
UO15	1 x DM5, 1 x AX15	150cm (5ft)	19cm (7.5ins)	10cm (4ins)	300kg (47st)
UO18	1 x DM5, 1 x AX18	180cm (6ft)	23cm (9ins)	10cm (4ins)	300kg (47st)
UO21	1 x DM5, 1 x AX21	210cm (7ft)	26cm (10ins)	10cm (4ins)	300kg (47st)
UO24	1 x DM5, 1 x AX24	240cm (8ft)	30cm (11.8ins)	10cm (4ins)	250kg (39st)

For full product dimensions see individual component pages.

Aerolight®-Classic

Premium non-folding ramp



So easy - simply place and use



Custom sizes available

4 sizes

Up to 150cm (5ft) long

Up to 400kg capacity



- ▶ Great portable solution for thresholds, kerbs and steps
- ▶ Well suited for public access
- ▶ Perfect for walking users

Code	Length	Capacity	Weight
Width: 76cm (30ins) (excluding handles). Lip width 71.4cm (28.1ins).			
AC6	60cm (2ft)	400kg (63st)	4.3kg (9lbs)
AC9	90cm (3ft)	350kg (55st)	5.6kg (12lbs)
AC12	120cm (4ft)	350kg (55st)	7.1kg (16lbs)
AC15	150cm (5ft)	350kg (55st)	8.5kg (19lbs)

Aerolight®-Lifestyle

Premium multi-folding ramp



Full-width safety and easy handling; great for out-and-about access and home use!

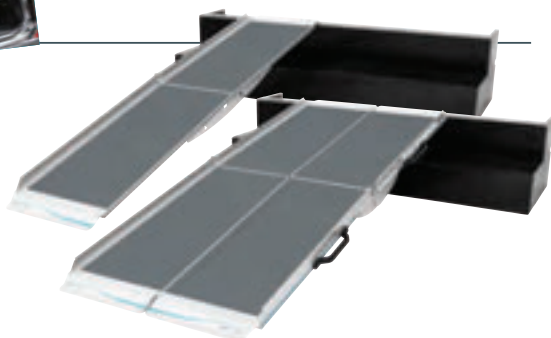


Custom sizes available

4 sizes

Up to 270cm (9ft) long

Up to 350kg capacity



- ▶ Safety hinges with pinch protection
- ▶ Highest strength-to-weight ratio scooter ramp available
- ▶ Easy vehicle loading
- ▶ Two halves make it very light to carry and easy to store

Code	Length	Capacity	Weight (Each Half)	Stored Dimensions L x W x D
Width: 74cm (29ins) (excluding handles). Lip width 69.6cm (27.4ins).				
AL18	180cm (6ft)	350kg (55st)	7.8kg (17lbs)	95 x 37 x 25cm (37 x 15 x 10ins)
AL21	210cm (7ft)	300kg (47st)	8.8kg (19lbs)	110 x 37 x 25cm (43 x 15 x 10ins)
AL24	240cm (8ft)	250kg (39st)	9.8kg (22lbs)	125 x 37 x 25cm (49 x 15 x 10ins)
AL27	270cm (9ft)	250kg (39st)	10.9kg (24lbs)	140 x 37 x 25cm (55 x 15 x 10ins)

Aerolight® - Broadfold

Premium folding ramp
Quick, easy & safe;
great for vehicle
access



Custom sizes
available

4 sizes

Up to 240cm
(8ft) long

Up to 350kg
capacity

A simple and effective scooter ramp, the Aerolight®-Broadfold folds to half-length for compact storage.

- Now with 4 rigid handles for safety and ease-of-use
- Easy vehicle loading - superb solution for taxi and minibus ramp applications
- Highest capacity broadfold ramp on the market!
- So easy to deploy!
- Full-width lip locates firmly into vehicle



Code	Length	Capacity	Weight	Stored Dimensions L x W x D
Width: 76cm (30ins) (excluding handles). Lip width 71.4cm (28.1ins).				
AB15	150cm (5ft)	350kg (55st)	12.1kg (27lbs)	80 x 19 x 76cm (31 x 7 x 30ins)
AB18	180cm (6ft)	350kg (55st)	13.5kg (30lbs)	95 x 19 x 76cm (37 x 7 x 30ins)
AB21	210cm (7ft)	300kg (47st)	14.9kg (33lbs)	110 x 19 x 76cm (43 x 7 x 30ins)
AB24	240cm (8ft)	250kg (39st)	16.4kg (36lbs)	125 x 19 x 76cm (49 x 7 x 30ins)

Aerolight® - Travel Ramp

Extremely compact and lightweight

A simple ready-to-go
solution

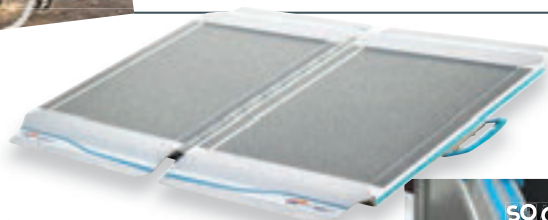


60cm (2ft) long

Up to 350kg
capacity

The Aerolight-Travel Ramp is your quick and easy to use answer to out-and-about access.

- Just right for kerbs and steps
- Handy carry bag to fit on the back of the wheelchair
- Great for any mobility device
- Full-width anti-slip surface for safety



Code	Length	Weight	Capacity
Width: 77cm (30ins) (excluding handles). Lip width 71.4cm (28.1ins).			
AXT	60cm (2ft)	4.5kg (10lbs) (excluding bag)	350kg (55st)

Aerolight®-Max

Commercial folding suitcase ramp

NEW

A rugged, multi-purpose version of the well proven Aerolight®-Xtra



Super strong handles



Surface grip and high contrast colours



Aerolight®-Max, an extra-tough version of the long-proven Aerolight-Xtra

- ▶ Designed and built in Britain for constant use in commercial and public access applications
- ▶ Even tougher ramp surface, well suited to trolley and flight case wheels if required
- ▶ High capacity construction to carry more substantial loads
- ▶ Utilises highly contrasting green and black colours for extra safety and visibility
- ▶ Other built-in benefits include extra ramp width and super-strong handles

Code	Length	Capacity	Weight	Stored Dimensions L x W x D
Width: 79cm (31ins) (excluding handles)				
AXM06	60cm (2ft)	475kg (75st)	6.4kg (14.1lbs)	60 x 40.5 x 8cm (24 x 15.9 x 3ins)
AXM09	90cm (3ft)	475kg (75st)	8.5kg (18.7lbs)	90 x 40.5 x 8cm (35 x 15.9 x 3ins)
AXM12	120cm (4ft)	425kg (67st)	10.6kg (23.3lbs)	120 x 40.5 x 8cm (47 x 15.9 x 3ins)
AXM15	150cm (5ft)	375kg (59st)	12.7kg (27.9lbs)	150 x 40.5 x 8cm (59 x 15.9 x 3ins)
AXM18	180cm (6ft)	375kg (59st)	14.8kg (32.6lbs)	180 x 40.5 x 8cm (71 x 15.9 x 3ins)
AXM21	210cm (7ft)	325kg (51st)	16.9kg (37.2lbs)	210 x 40.5 x 8cm (83 x 15.9 x 3ins)
AXM24	240cm (8ft)	275kg (43st)	19kg (41.8lbs)	240 x 40.5 x 8cm (98 x 15.9 x 3ins)

Aerolight®-Accessories



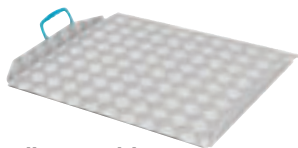
Aerolight® Wall Strap
Kit Code: AWK
 Quick-fit strap holds any Aerolight® ramp vertically against wall for tidy storage



Aerolight® Joining Support
Code: AJ4
 Use to join 2 Aerolight ramps together (see page 5)



Aerolight® Ramp Locating Peg Kit Code: ARLS
 Can be fitted to any Aerolight® ramp to securely locate on upper step or in vehicle, etc. Kit includes two studs, drill bit and fixings. Underside of lip shown with locating studs.



Doorline™-Multi
Code: DM5, DM7
 Combine with the Aerolight ramps to access up to, over the threshold and into the building. (More information on page 12)



Aerolight® Upright Storage Bracket Kit
Code: ASBV
 Compact vertical storage for Aerolight-Xtra ramps. Comes with locking top section for extra security. (Max. 180cm ramp). Key provided



Aerolight® Horizontal Storage Bracket Kit - Code: ASB
 Easy, ergonomic storage for Aerolight®-Classic and Xtra ramps (Padlock and key provided)



Aerolight®-Connect Platform
 For use with Aerolight ramps - excellent for events, up to 42cm (16.5ins) high
CP12 Aerolight-Connect platform 122 x 122cm c/w safety kerbs, doorplate, adjustable legs and rubber feet (no handrails or steps)
CPHK Single handrail kit for CP12
Step Accessories - see Accessories Step Kits for Welcome® platforms
Additional Height Accessories

Utilityramp™ Industrial/Commercial Portable Ramp

Rugged, yet easy to use and portable



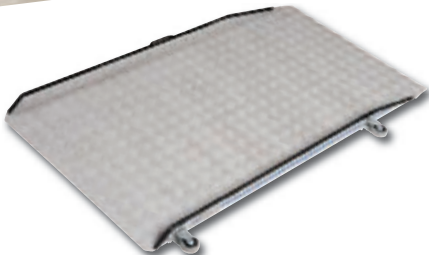
12 sizes



Upto 240cm (8ft) long



Up to 400kg capacity



- ▶ Great for wheelchair access or industrial use
- ▶ Unique Gripdeck™ highly anti-slip surface retains grip even when wet
- ▶ Up to 400kg weight capacity
- ▶ Standard 76cm wide or Superwide 90cm wide versions available

Code	Length	Capacity	Weight
Width: 76cm (30ins)			
UR9*	90cm (3ft)	400kg (63st)	9kg (20lbs)
UR12*	120cm (4ft)	400kg (63st)	12.5kg (28lbs)
UR15	150cm (5ft)	400kg (63st)	15.5kg (34lbs)
UR18	180cm (6ft)	400kg (63st)	19kg (42lbs)
UR21	210cm (7ft)	350kg (55st)	22.5kg (50lbs)
UR24	240cm (8ft)	300kg (47st)	25.5kg (56lbs)

Code	Length	Capacity	Weight
Width: 90cm (35ins)			
URW9*	90cm (3ft)	400kg (63st)	10.5kg (23lbs)
URW12*	120cm (4ft)	400kg (63st)	14.5kg (32lbs)
URW15	150cm (5ft)	400kg (63st)	18.5kg (41lbs)
URW18	180cm (6ft)	400kg (63st)	22kg (49lbs)
URW21	210cm (7ft)	350kg (55st)	26kg (57lbs)
URW24	240cm (8ft)	300kg (47st)	30kg (66lbs)

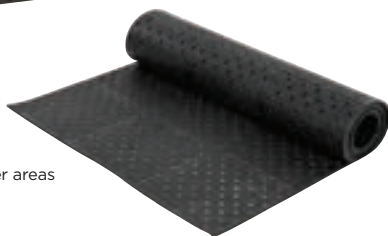
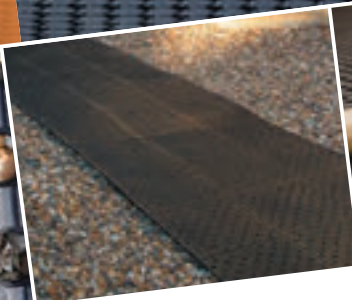
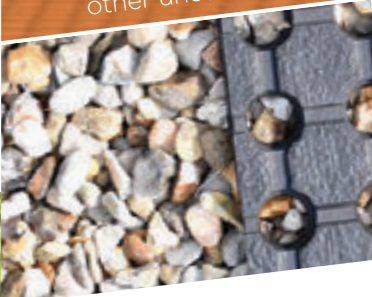
* No wheels. Kerb Height 7cm (3ins)

Aerolight® - Full-width portable ramps



Rollout-Trackway

Instant access solution for grass, gravel, and other uneven surfaces



- ▶ Extremely durable, and can cover grass, gravel and cobbles, etc
- ▶ Four practical sizes means multiple pieces can be used for larger areas
- ▶ Completes your access route

Rollout-Trackway™

Code	Length	Weight
Width: 90cm (35.4ins)		
RT15	150cm (4ft 11ins)	12kg (26lbs)
RT25	250cm (8ft 2ins)	20kg (44lbs)
RT50	500cm (16ft 5ins)	40kg (88lbs)

Rollout-Trackway Patio™

Code	Size	Weight
RTP20	2m x 1.8m (6ft 7ins x 5ft 11ins)	32kg (71lbs)

Rollout-Trackway™ Pegs

- ▶ Heavy duty pegs for safely securing Rollout Trackway
- ▶ Convenient pack of 12



Code	Height	Width
RTPEG	20cm (8ins)	2.5cm (1ins)

NEW



rampCENTRE[®] doorline[™]

Threshold ramps

Whatever the threshold, the Doorline range can cope.
Huge range • Adjustable options Easy-to-use • Excellent finish

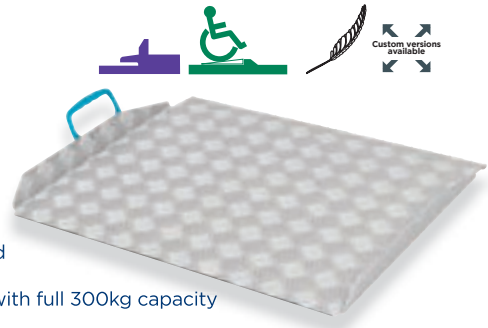
- ▶ Very simple to deploy
- ▶ Can be used either or both sides of a door
- ▶ Removable and leave-in-place solutions available



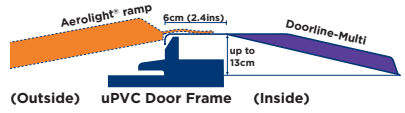
doorline[™] - multi

Your benefits:

- ▶ Designed to overcome uPVC door thresholds
- ▶ Unique lip design with rubber anti-slip to safely eliminate threshold damage
- ▶ Designed for use with our Aerolight[™] and Ultralight[™] ramps to easily bridge any threshold
- ▶ Anodised finish for many years of service
- ▶ Extremely lightweight for quick and easy use, with full 300kg capacity
- ▶ Comfortable, foldaway, rattle-free handle



Code	Max. Recom. Height	Length	Capacity	Weight
Width: 70cm (27.6ins)				
DM5	10cm (3.9ins)	56cm (22ins)	300kg (47st)	3.6kg (7.8lbs)
DM7	13cm (5.1ins)	74cm (29ins)	300kg (47st)	4.7kg (10.4lbs)



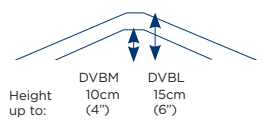
The Butterfly Ramp[®]

This totally unique bridge ramp automatically adjusts as it is placed to suit all threshold types, with no user adjustment required!



Your benefits:

- ▶ So fast and easy to use and perfect for any mobility device
- ▶ Low profile design for a shallow and safe gradient
- ▶ Two convenient sizes to cover thresholds of up to 6" (15cm) high
- ▶ All-weather full-width anti-slip surface folds inside when carrying for extra safety, with integral comfort carrying handles
- ▶ Registered designs and patents granted



Code	Height Range From	To	Overall Length	Capacity	Weight	Stored Dimensions L x H x D
Width: 70cm (28ins)						
DVBM	0cm	10cm (4ins)	90cm (36ins)	350kg (55st)	6.8kg (15lbs)	70 x 48 x 4cm (28 x 19 x 1.5ins)
DVBL	0cm	15cm (6ins)	120cm (48ins)	300kg (47st)	9.1kg (20lbs)	70 x 63 x 4cm (28 x 25 x 1.5ins)

doorline™ - threshold wedge



Your benefits:

- 6 popular inch sizes immediately available from stock
- Superb alternative to fibreglass wedge ramps
- Fully sanitisable and washable with pressure and heat
- Unique new robust and lighter weight design
- Excellent all-weather grip surface



Easily fixed in place for extra security

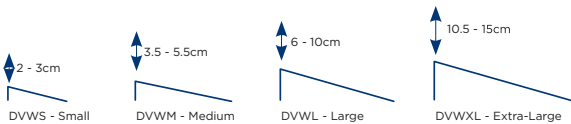
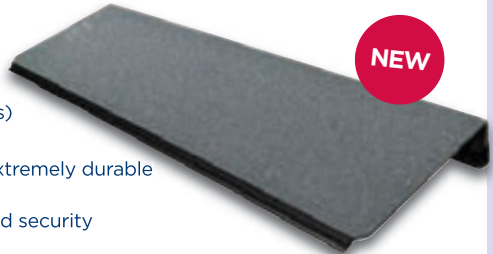
Code	Height	Length	Capacity	Weight
Width: 74cm (29ins)				
DTW1.5	4cm (1.5ins)	20cm (7.8ins)	350kg (55st)	1.7kg (3.7lbs)
DTW2	5cm (2ins)	27cm (10.6ins)	350kg (55st)	2.3kg (5lbs)
DTW3	7.5cm (3ins)	40cm (15.7ins)	350kg (55st)	4.5kg (10lbs)
DTW4	10cm (4ins)	50cm (19.7ins)	350kg (55st)	5.5kg (12lbs)
DTW5	12.5cm (5ins)	70cm (27.6ins)	350kg (55st)	7.3kg (16lbs)
DTW6	15cm (6ins)	90cm (35.4ins)	350kg (55st)	9.2kg (20.2lbs)

doorline™ - variwedge



Your benefits:

- Gripline™ floor grip and protection removes risk of movement while in use
- Match threshold height to within the thickness of a coin (adjusts in 5mm increments)
- Remove and readjust for re-use elsewhere
- Well-suited for indoor and outdoor use with extremely durable anodised finish
- Can be fixed in place for maximum stability and security

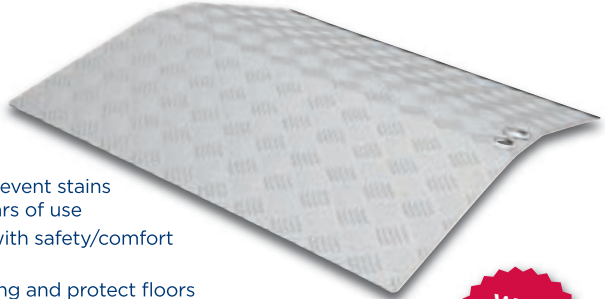


Code	Min. Height	Max. Height	Length	Capacity	Weight
Width: 74cm (29.1ins)					
DVWS	2cm (0.8ins)	3cm (1.2ins)	15cm (5.9ins)	350kg (55st)	1.5kg (3.3lbs)
DVWM	3.5cm (1.4ins)	5.5cm (2.2ins)	25cm (9.8ins)	350kg (55st)	2.5kg (5.5lbs)
DVWL	6cm (2.4ins)	10cm (3.9ins)	50cm (19.7ins)	350kg (55st)	5.3kg (11.7lbs)
DVWXL	10.5cm (4.1 ins)	15cm (5.9ins)	70cm (27.6ins)	350kg (55st)	7.2kg (15.8lbs)



Assemble or adjust for re-use in less than a minute!

doorline™ - bridge

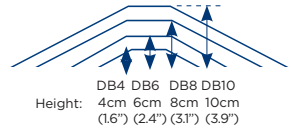


Your benefits:

- ▶ Bridge awkward thresholds
- ▶ Unmatched level of finish to prevent stains and corrosion, and provide years of use
- ▶ Unique comfortable carrying with safety/comfort eyelets on the finger holes
- ▶ Rubber strips to prevent slipping and protect floors
- ▶ Excellent grip surface
- ▶ Extremely lightweight and very quick to deploy



Code	Height	Length	Capacity*	Weight
Width: 70cm (27.6ins)				
DB4	4cm (1.6ins)	48cm (18.9ins)	300kg (47st)	3kg (6.6lbs)
DB6	6cm (2.4ins)	56cm (22ins)	300kg (47st)	3.5kg (7.7lbs)
DB8	8cm (3.1ins)	72cm (28.3ins)	300kg (47st)	5.4kg (11.9lbs)
DB10	10cm (3.9ins)	97cm (38.2ins)	300kg (47st)	7.6kg (16.8lbs)

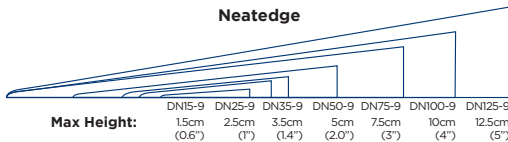


*Capacity assumes ramp rests on threshold

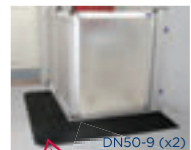
doorline™ - neatedge

Your benefits:

- ▶ Extremely versatile - can be used in a huge number of situations
- ▶ Unobtrusive, strong and versatile rubber wedge ramps
- ▶ Soft surface great for use in schools, care/nursing homes and for shower trays/washroom pods
- ▶ Incredible weight capacity - well suited for industrial use
- ▶ Doormat-like appearance blends in well
- ▶ Permanent fixing kit option



Code	Height	Length	Capacity	Weight
Width: 90cm (35ins)				
DN15-9	1.5cm (0.6ins)	12cm (4.5ins)	500kg (79st)	1.4kg (3lbs)
DN25-9	2.5cm (1ins)	20cm (8ins)	500kg (79st)	3.1kg (6.8lbs)
DN35-9	3.5cm (1.4ins)	28cm (11ins)	500kg (79st)	5.9kg (13lbs)
DN50-9	5cm (2ins)	40cm (16ins)	500kg (79st)	11kg (24.3lbs)
DN75-9	7.5cm (3ins)	60cm (24ins)	500kg (79st)	18kg (39.7lbs)
DN100-9	10cm (4ins)	80cm (31.5in)	500kg (79st)	31kg (68.3lbs)
DN125-9	12.5cm (5ins)	100cm (39.4ins)	500kg (79st)	51kg (112.4lbs)
DNF	Adhesive for permanent fixing (290ml), including application gun			



Ideal for showers or wet rooms

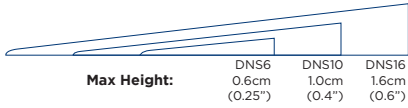
Can be trimmed or cut to size as required.

doorline™ - neatslope



Your benefits:

- Available in 3 useful heights
- Eliminate low threshold trip hazards!
- Easy to trim if required
- Available with or without self-adhesive backing

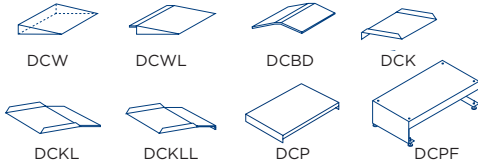


Code	Height	Length	Capacity	Weight	Self Adhesive Y/N	
Width: 90cm (35.4ins)						
DNS6	0.6cm (0.25ins)	6cm (2.4ins)	350kg (55st)	0.3kg (0.7lbs)	N	
DNS10	1cm (0.4ins)	10cm (3.9ins)	350kg (55st)	0.75kg (1.7lbs)	N	
DNS16	1.6cm (0.6ins)	15cm (5.9ins)	350kg (55st)	1kg (2.2lbs)	N	
With self-adhesive backing	DNS6A	0.6cm (0.25ins)	6cm (2.4ins)	350kg (55st)	0.3kg (0.7lbs)	Y
	DNS10A	1cm (0.4ins)	10cm (3.9ins)	350kg (55st)	0.75kg (1.7lbs)	Y
	DNS16A	1.6cm (0.6ins)	15cm (5.9ins)	350kg (55st)	1kg (2.2lbs)	Y



doorline™ - custom

Specially made to your specifications



These ramps are individually manufactured to your specified sizes. Choose from 8 styles for the very few applications our stock products cannot solve.

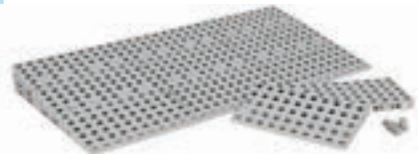
Build-a-Slope™

Totally modular threshold ramp



Your benefits:

- Easily configured for any application
- Totally weatherproof
- Quick to assemble and install
- Choose from 4 popular kits
- Other sizes and special pieces are also available
- Manufactured by and compatible with Excellent Systems



Code	Min. Height	Max. Height	Length	Capacity	Weight
Width: 75cm (29.5ins)					
BSK1	1.8cm (0.7ins)	5.5cm (2.2ins)	25cm (10ins)	450kg (71st)	0.85kg (1.9lbs)
BSK2	3.6cm (1.4ins)	9.1cm (3.6ins)	50cm (20ins)	450kg (71st)	3.4kg (7.5lbs)
BSK3	7.2cm (2.8ins)	12.7cm (5ins)	75cm (30ins)	450kg (71st)	7.6kg (16.8lbs)
BSK4	10.8cm (4.3ins)	16.3cm (6.4ins)	100cm (39ins)	450kg (71st)	13.5kg (29.8lbs)



rampCENTRE[®] ultralight[™]

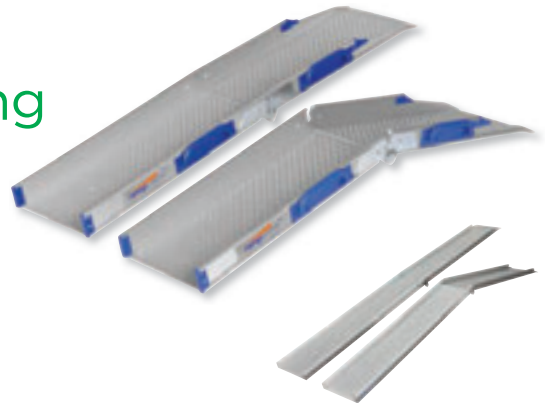


Exceptionally well crafted in anodised aluminium, the Ultralight original perforated channel ramps offer an outstanding combination of compact storage and ease of use.

- Anodised for durability** • **Unique built-in grip surface** • **Foldaway handles** • **Wide channels**
- Great for narrow doorways
 - Commonly used for residential and vehicle access
 - Great for standard wheelchairs and four-wheel scooters
 - Very compact for storage
 - Extremely portable
 - Great for cross-slopes



ultralight[™] -folding



- Can be used to bridge thresholds
- Ramp folds in half for compact storage
- Low kerbs and long bevel sides greatly increase clearance for scooters and power chairs

Also available in a low profile version, great for smaller/lower ground clearance scooters. **(PFE20)**

Code (Pair)	Length	Capacity (Pair)	Weight (Each Half)	Stored Dimensions L x W x D
Width (Internal Channel): 21cm (8ins) Kerb Height: 5cm (2ins)				
PF11	110cm (3ft 7ins)	400kg (63st)	3.6kg (8lbs)	55 x 24.5 x 13cm (22 x 10 x 5ins)
PF15	150cm (4ft 11ins)	400kg (63st)	4.6kg (11lbs)	77 x 24.5 x 13cm (30 x 10 x 5ins)
PF20	200cm (6ft 7ins)	350kg (55st)	6kg (14lbs)	102 x 24.5 x 13cm (40 x 10 x 5ins)
Width (Internal Channel): 18cm (7ins) Kerb Height: 3.5cm (1.4ins)				
PFE20	200cm (6ft 7ins)	300kg (47st)	5.8kg (12.8lbs)	104cm x 22.5cm x 10cm (41 x 9 x 4ins)

ultralight™ -telescopic



- ▶ Versatile ramps that can be used at any length, even partly extended
- ▶ Extremely compact storage
- ▶ Ideal for vehicle access
- ▶ Uniquely high capacity and generous channel widths
- ▶ The two halves can be used at different lengths from each other - great for cross-slopes!



Code (Pair)	Length		Capacity (Pair)	Weight (Each Half)	Stored Dimensions L x W x D
	Max	Min			
Width (Internal Channel): 19cm (8ins) Kerb Height: 5cm (2ins)					
PT12-2	120cm (3ft 11ins)	75cm (2ft 5ins)	400kg (63st)	3.6kg (8lbs)	75 x 24.5 x 6cm (29 x 10 x 2ins)
PT20-2	202cm (6ft 8ins)	117cm (3ft 10ins)	350kg (55st)	5.8kg (13lbs)	117 x 24.5 x 6cm (46 x 10 x 2ins)
Width (Internal Channel): 18cm (7ins) Kerb Height: 5cm (2ins)					
PT20-3	199cm (6ft 6ins)	87cm (2ft 10ins)	350kg (55st)	6.1kg (14lbs)	87 x 24.5 x 7cm (31 x 10 x 3ins)
PT29-3	288cm (9ft 5ins)	117cm (3ft 10ins)	300kg (47st)	8.2kg (18lbs)	117 x 24.5 x 7cm (46 x 10 x 3ins)



ultralight™ -combi



- ▶ Low kerbs and long level sides greatly increase clearance for scooters and power chairs
- ▶ Wide channels as standard, with extra-width options for larger mobility devices (see PCW codes)
- ▶ Good choice for bridging a threshold with unequal levels each side
- ▶ Seriously lightweight, and incredibly compact for storage and stowing in a vehicle
- ▶ One solution for many applications



Code (Pair)	Length				Capacity (Pair)	Weight (Each Half)	Stored Dimensions L x W x D
	Max	Min	Telescopic Section	Hinged Section			
Width (Internal Channel): 19cm (8ins) Kerb Height: 5cm (2ins)							
PC21-3	207cm (6ft 9ins)	150cm (4ft 11ins)	132cm (52ins)	75cm (30ins)	350kg (55st)	6.5kg (14lbs)	76 x 23.5 x 13cm (30 x 9 x 5ins)
PC28-3	276cm (9ft 1ins)	200cm (6ft 7ins)	176cm (69ins)	100cm (39ins)	300kg (47st)	8.4kg (19lbs)	102 x 23.5 x 13cm (40 x 9 x 5ins)
Width (Internal Channel): 25cm (10ins) Kerb Height: 5cm (2ins)							
PCW21-3	204cm (6ft 8ins)	152cm (5ft)	128cm (50ins)	76cm (30ins)	350kg (55st)	8.2kg (18lbs)	78 x 29.2 x 13cm (31 x 11 x 5ins)
PCW28-3	294cm (9ft 8ins)	212cm (6ft 11ins)	188cm (74ins)	106cm (42ins)	300kg (47st)	10.9kg (24lbs)	108 x 29.2 x 13cm (43 x 11 x 5ins)

rampCENTRE® permaramp®



A concept that totally transforms wheelchair access, the Permaramp range is designed to be easily adjusted and fixed down or left in place for every type of threshold.

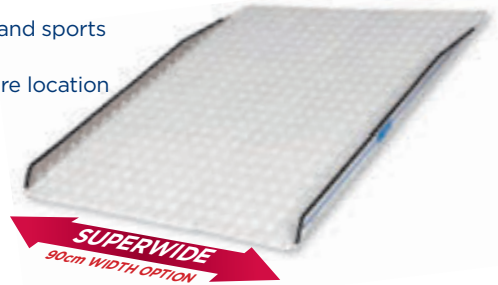
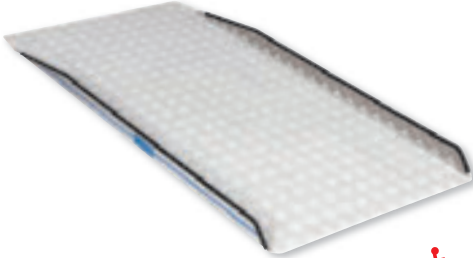
Cut-away kerbs • Easy installation • Extremely durable



- ▶ Great for semi-permanent access
- ▶ Avoid big installation projects and construction mess
- ▶ Can be left in place as long as required then re-used elsewhere
- ▶ Quick and strong access solutions
- ▶ Unique Gripdeck™ surface for incredible grip and sustained outside use

permaramp® - original

- ▶ Excellent for wooden door thresholds
- ▶ Available in standard 76cm width, or Superwide 90cm width (perfect for single outward-opening doors and a great bariatric ramp solution)
- ▶ Well suited for scooters, mobility devices and sports wheelchairs
- ▶ Fixing options at top and bottom for secure location
- ▶ Up to 400kg capacity



Permaramp-Original

Code	Length	Capacity	Weight
Width: 76cm (30ins)			
PO9	90cm (3ft)	400kg (63st)	8.5kg (19lbs)
PO12	120cm (4ft)	400kg (63st)	12kg (26lbs)
PO15	150cm (5ft)	400kg (63st)	15kg (33lbs)
PO18	180cm (6ft)	400kg (63st)	18.5kg (41lbs)
PO21	210cm (7ft)	350kg (55st)	22kg (49lbs)
PO24	240cm (8ft)	300kg (47st)	25kg (55lbs)

Code	Length	Capacity	Weight
POHR30	300cm (10ft)	400kg (63st)	(2 x PO15 + 1 x POHRJ)
POHR36	360cm (12ft)	400kg (63st)	(2 x PO18 + 1 x POHRJ)
POHR42	420cm (14ft)	350kg (55st)	(2 x PO21 + 1 x POHRJ)
POHR48	480cm (16ft)	300kg (47st)	(2 x PO24 + 1 x POHRJ)

Permaramp-Original SUPERWIDE

Code	Length	Capacity	Weight
Width: 90cm (36ins)			
POW9	90cm (3ft)	400kg (63st)	10kg (22lbs)
POW12	120cm (4ft)	400kg (63st)	14kg (31lbs)
POW15	150cm (5ft)	400kg (63st)	18kg (40lbs)
POW18	180cm (6ft)	400kg (63st)	22kg (48lbs)
POW21	210cm (7ft)	350kg (55st)	26kg (58lbs)
POW24	240cm (8ft)	300kg (47st)	30kg (65lbs)

Code	Length	Capacity	Weight
POWHR30	300cm (10ft)	400kg (63st)	(2 x POW15 + 1 x POWHRJ)
POWHR36	360cm (12ft)	400kg (63st)	(2 x POW18 + 1 x POWHRJ)
POWHR42	420cm (14ft)	350kg (55st)	(2 x POW21 + 1 x POWHRJ)
POWHR48	480cm (16ft)	300kg (47st)	(2 x POW24 + 1 x POWHRJ)

permaramp® - adjust

- ▶ Easy height adjustment and installation from above
- ▶ Designed to clear protruding thresholds and sills
- ▶ Fix to any firm flat or sloping surface
- ▶ Telescopic legs can be adjusted to accommodate different threshold types and give total height adjustment from 7.5cm (3ins) to 26cm (10.3ins) high
- ▶ Entry flap accessory available to transition right into the property
- ▶ All lengths available in Superwide 90cm option: a great bariatric ramp solution. Perfect for single outward-opening doors and extra-wide mobility devices



Permaramp-Adjust

Code	Length	Capacity	Weight
Width: 76cm (30ins)			
PA9	90cm (3ft)	400kg (63st)	12.5kg (28lbs)
PA12	120cm (4ft)	400kg (63st)	16kg (35lbs)
PA15	150cm (5ft)	400kg (63st)	19kg (42lbs)
PA18	180cm (6ft)	400kg (63st)	22.5kg (50lbs)
PA21	210cm (7ft)	350kg (55st)	26kg (57lbs)
PA24	240cm (8ft)	300kg (47st)	29kg (64lbs)
PAHR30	300cm (10ft)	400kg (63st)	(1 x PO15 + 1 x PA15 + 1 x POHRJ)
PAHR36	360cm (12ft)	400kg (63st)	(1 x PO18 + 1 x PA18 + 1 x POHRJ)
PAHR42	420cm (14ft)	350kg (55st)	(1 x PO21 + 1 x PA21 + 1 x POHRJ)
PAHR48	480cm (16ft)	300kg (47st)	(1 x PO24 + 1 x PA24 + 1 x POHRJ)

High Rise Kits (See P22)

Permaramp-Adjust SUPERWIDE

Code	Length	Capacity	Weight
Width: 90cm (36ins)			
PAW9	90cm (3ft)	400kg (63st)	14kg (22lbs)
PAW12	120cm (4ft)	400kg (63st)	18kg (40lbs)
PAW15	150cm (5ft)	400kg (63st)	22kg (48lbs)
PAW18	180cm (6ft)	400kg (63st)	26kg (57lbs)
PAW21	210cm (7ft)	350kg (55st)	30kg (66lbs)
PAW24	240cm (8ft)	300kg (47st)	34kg (75lbs)
PAWHR30	300cm (10ft)	400kg (63st)	(1 x POW15 + 1 x PAW15 + 1 x POWHRJ)
PAWHR36	360cm (12ft)	400kg (63st)	(1 x POW18 + 1 x PAW18 + 1 x POWHRJ)
PAWHR42	420cm (14ft)	350kg (55st)	(1 x POW21 + 1 x PAW21 + 1 x POWHRJ)
PAWHR48	480cm (16ft)	300kg (47st)	(1 x POW24 + 1 x PAW24 + 1 x POWHRJ)

High Rise Kits (See P22)

permaramp® - entry flap

- ▶ Hand strap for fast and easy operation
- ▶ Excellent for sliding and inward-opening doors
- ▶ Unique Gripdeck™ surface on both sides



Code	Length	Capacity	Weight
Width: 72cm (28.3ins)			
PE5	45cm (18ins)	300kg (47st)	4.8kg (10.6lbs)

NOTE: Only for use with standard-width Permaramp-Adjust, ordered separately

permaramp® - relocatable external ramps

rampCENTRE®

permaramp®-quickrails™



The all-new permaramp®-quickrails™ are your answer for an instant, fixed ramp solution.

This unique range is designed to be extremely universal and easy to fit.

Pre-assembled handrails

- One side, both sides (or no sides!)
- Interchangeable left or right
- Retro-fittable
- 4 colour options



Choose from

permaramp®-adjust totally adjustable and self-supporting, great for uPVC thresholds. **or**

permaramp®-original for fixing straight to the threshold, ideal for wooden door thresholds

Factory-fitted handrail sockets

Gripdeck™
technology

Incredible Grip



2 widths

- 76cm (30ins)
- 90cm (36ins) Superwide

5 lengths

- 120cm (4ft)
- 150cm (5ft)
- 180cm (6ft)
- 210cm (7ft)
- 240cm (8ft)

Super-Fast and Convenient Assembly!

No-Tools assembly kit option



Seen the video?





Permaramp® with quickrails™

Length	Permaramp® -Original		Permaramp® -Adjust		
	Both Sides	One Side (FIT LEFT OR RIGHT)	Both Sides	One Side (FIT LEFT OR RIGHT)	
Width: 76cm (30ins)					
120cm (4ft)	PO12R2	PO12R1	PA12R2	PA12R1	
150cm (5ft)	PO15R2	PO15R1	PA15R2	PA15R1	
180cm (6ft)	PO18R2	PO18R1	PA18R2	PA18R1	
210cm (7ft)	PO21R2	PO21R1	PA21R2	PA21R1	
240cm (8ft)	PO24R2	PO24R1	PA24R2	PA24R1	
High Rise Kits (See P22)	300cm (10ft)	POHR30R2	POHR30R1	PAHR30R2	PAHR30R1
	360cm (12ft)	POHR36R2	POHR36R1	PAHR36R2	PAHR36R1
	420cm (14ft)	POHR42R2	POHR42R1	PAHR42R2	PAHR42R1
	480cm (16ft)	POHR48R2	POHR48R1	PAHR48R2	PAHR48R1

Length	Permaramp® -Original		Permaramp® -Adjust		
	Both Sides	One Side (FIT LEFT OR RIGHT)	Both Sides	One Side (FIT LEFT OR RIGHT)	
Width: 90cm (36ins) SUPERWIDE					
120cm (4ft)	POW12R2	POW12R1	PAW12R2	PAW12R1	
150cm (5ft)	POW15R2	POW15R1	PAW15R2	PAW15R1	
180cm (6ft)	POW18R2	POW18R1	PAW18R2	PAW18R1	
210cm (7ft)	POW21R2	POW21R1	PAW21R2	PAW21R1	
240cm (8ft)	POW24R2	POW24R1	PAW24R2	PAW24R1	
High Rise Kits (See P22)	300cm (10ft)	POWHR30R2	POWHR30R1	PAWHR30R2	PAWHR30R1
	360cm (12ft)	POWHR36R2	POWHR36R1	PAWHR36R2	PAWHR36R1
	420cm (14ft)	POWHR42R2	POWHR42R1	PAWHR42R2	PAWHR42R1
	480cm (16ft)	POWHR48R2	POWHR48R1	PAWHR48R2	PAWHR48R1

Permaramp-Adjust leg height 7.5cm (3ins) to 26cm (10.3ins) - see page 19 for more information. For ramp weights and capacities see pages 18-19.

Handrail Colour Options

Add suffix to above codes for colour option if required

Colours		Code Suffix
Original Graphite		No suffix
Original Graphite with Safety Yellow handrails		-Y
Garden Green		-G
Heritage Brown		-B

Permaramp®-Quickrails™ dimensions:

- Add 12.5cm (5ins) to the ramp width each side the Quickrails are added
- The Quickrail length is the same as the ramp length and can be adjusted if required
- Handrail height is 92cm (36ins)
- The handrails uprights are 45cm (18ins) from each end of the ramp

Ask for more information about: • Retrofitting Permaramp®-Quickrails™ Options for increased capacity • 'Portable' type applications for events, etc.

Accessories

Permaramp®-Quickrails™

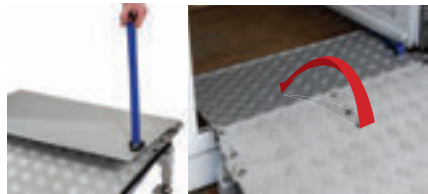
No-Tool Kit

Code (for one side): **PRNTK**



Permaramp®-Entry Flap

Fits standard width Permaramp®-adjust Code: **PE5** - See page 19



rampCENTRE® permaramp®-High Rise

Reach double the height!

NEW



Up to 400kg
capacity



300cm - 480cm long
(10ft - 16ft)



Install the Permaramp®-High Rise in as little as 30 minutes!
Easy to specify, and quick to fit, this ramp has all the Permaramp® benefits, and more.
A straightforward and compact solution that reaches greater heights for lower cost
avoiding disruptive building work and lengthy installs.

- ▶ Reach from 300cm to 480cm (10ft to 16ft) with relocatable ramps
- ▶ Extremely quick and easy to install
- ▶ Compatible with Superwide, Adjust, and Original Permaramp® options
- ▶ Bridge uPVC thresholds with the entry flap accessory (page 19)



High Rise - Kit Options



Tailor the High Rise kit to suit your application needs

- ▶ Quickrail handrails for enhanced safety and support
- ▶ Superwide width option for wider mobility requirements
- ▶ Self-supporting Permaramp®-Adjust for uPVC thresholds
- ▶ Install from 1:15 to 1:6 gradient (See page 3 'How steep')

permaramp®-High Rise with Quickrails™ - see pages 20-21

permaramp®-Original		
Length	Both Sides	One Side (FIT LEFT OR RIGHT)

Width: 76cm (30ins)

300cm (10ft)	POHR30R2	POHR30R1
360cm (12ft)	POHR36R2	POHR36R1
420cm (14ft)	POHR42R2	POHR42R1
480cm (16ft)	POHR48R2	POHR48R1

Width: 90cm (36ins) SUPERWIDE

300cm (10ft)	POWHR30R2	POWHR30R1
360cm (12ft)	POWHR36R2	POWHR36R1
420cm (14ft)	POWHR42R2	POWHR42R1
480cm (16ft)	POWHR48R2	POWHR48R1

permaramp®-Adjust		
Length	Both Sides	One Side (FIT LEFT OR RIGHT)

Width: 76cm (30ins)

300cm (10ft)	PAHR30R2	PAHR30R1
360cm (12ft)	PAHR36R2	PAHR36R1
420cm (14ft)	PAHR42R2	PAHR42R1
480cm (16ft)	PAHR48R2	PAHR48R1

Width: 90cm (36ins) SUPERWIDE

300cm (10ft)	PAWHR30R2	PAWHR30R1
360cm (12ft)	PAWHR36R2	PAWHR36R1
420cm (14ft)	PAWHR42R2	PAWHR42R1
480cm (16ft)	PAWHR48R2	PAWHR48R1

Permaramp-Adjust leg height 7.5cm (3ins) to 26cm (10.3ins) - see page 19 for more information

permaramp®-High Rise (without Quickrails™) - see pages 18-19

permaramp®-Original			
Code	Length	Capacity	Includes

Width: 76cm (30ins)

POHR30	300cm (10ft)	400kg (63st)	(2 x PO15 + 1 x POHRJ)
POHR36	360cm (12ft)	400kg (63st)	(2 x PO18 + 1 x POHRJ)
POHR42	420cm (14ft)	350kg (55st)	(2 x PO21 + 1 x POHRJ)
POHR48	480cm (16ft)	300kg (47st)	(2 x PO24 + 1 x POHRJ)

Width: 90cm (36ins) SUPERWIDE

POWHR30	300cm (10ft)	400kg (63st)	(2 x POW15 + 1 x POWHRJ)
POWHR36	360cm (12ft)	400kg (63st)	(2 x POW18 + 1 x POWHRJ)
POWHR42	420cm (14ft)	350kg (55st)	(2 x POW21 + 1 x POWHRJ)
POWHR48	480cm (16ft)	300kg (47st)	(2 x POW24 + 1 x POWHRJ)

permaramp®-Adjust			
Code	Length	Capacity	Includes

Width: 76cm (30ins)

PAHR30	300cm (10ft)	400kg (63st)	(1 x PO15 + 1 x PA15 + 1 x POHRJ)
PAHR36	360cm (12ft)	400kg (63st)	(1 x PO18 + 1 x PA18 + 1 x POHRJ)
PAHR42	420cm (14ft)	350kg (55st)	(1 x PO21 + 1 x PA21 + 1 x POHRJ)
PAHR48	480cm (16ft)	300kg (47st)	(1 x PO24 + 1 x PA24 + 1 x POHRJ)

Width: 90cm (36ins) SUPERWIDE

PAWHR30	300cm (10ft)	400kg (63st)	(1 x POW15 + 1 x PAW15 + 1 x POWHRJ)
PAWHR36	360cm (12ft)	400kg (63st)	(1 x POW18 + 1 x PAW18 + 1 x POWHRJ)
PAWHR42	420cm (14ft)	350kg (55st)	(1 x POW21 + 1 x PAW21 + 1 x POWHRJ)
PAWHR48	480cm (16ft)	300kg (47st)	(1 x POW24 + 1 x PAW24 + 1 x POWHRJ)

Permaramp-Adjust height 7.5cm (3ins) to 26cm (10.3ins) - See page 19 for more information

Accessories

Permaramp®-High Rise Joiner* (maximum height 50cm (19.7ins))	POHRJ	
Permaramp®-High Rise Joiner SUPERWIDE* (maximum height 50cm (19.7ins))	POWHRJ	
Permaramp®-High Rise Quickrail Connector*	POHRQJ	
Rubber foot accessory for indoor use (pair)	WRIF	
Soft-ground leg bearer for grass, flower beds, gravel, etc	Long: 15 x 3.8 x 120cm (6 x 1.6 x 48ins)	WRLB
	Short: 15 x 3.8 x 30cm (6 x 1.6 x 12ins)	WRLBS

*Included in High Rise kits

rampCENTRE® Welcome®-Giant Half-Step



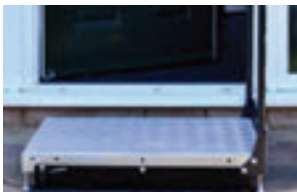
Until now, the traditional half-step simply offered an ambulant user shallower step access.

The proven Welcome®-Giant Half-Step reaches a new level!

This unique and modular range takes into account that people with various walking challenges need more workable solutions.



3 challenges solved...



1. Safe and Manageable Step Heights

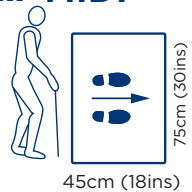


2. Eliminate the Trip Risk of Raised Threshold Obstacles

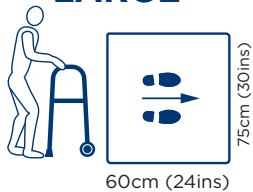


3. Instant, Safe, Standalone Handrail Solution

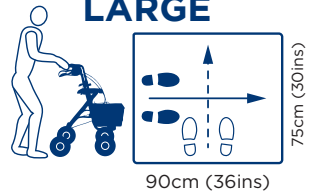
3 sizes... MIDI





LARGE








EXTRA-LARGE



Specifications	MIDI	LARGE	EXTRA-LARGE
 <p>Giant Half-Step With 75cm anti-trip toe-plate, rubber and fix-down feet; Height range: 8 - 15cm (3.1 - 6ins)</p>	 <p>75cm (30ins) 45cm (18ins)</p>	 <p>75cm (30ins) 60cm (24ins)</p>	 <p>75cm (30ins) 90cm (36ins)</p>
Ambulant	✓	✓	✓
Limited Knee/Leg Mobility	-	✓	✓
Walking-Frame	-	✓	✓
Rollator	-	-	✓
Limited Space	✓	✓	-
Outward-opening Doors	-	-	✓
Capacity	400kg (63st)	400kg (63st)	400kg (63st)
Code	WHSM	WHSL	WHSXL

KITS FOR EASY ORDERING	MIDI	LARGE	EXTRA-LARGE
 <p>Giant Half-Step Kit Giant Half-Step Kit with handrail; height range: 8 - 15cm (3.1 - 6ins)</p>	WHSMR Includes: WHSM WHS45	WHSLR Includes: WHSL WHS60	WHSXLR Includes: WHSXL WHS90
 <p>Double Giant Half-Step Kit Double Giant Half-Step kit with handrails; height up to 20cm (8ins) (includes height-extension and handrail joining kits)</p>	WHSM2R Includes: 2 x WHSM 2 x WHS45 WHSRJK WHSLXX	WHSL2R Includes: 2 x WHSL 2 x WHS60 WHSRJK WHSLXX	WHSXL2R Includes: 2 x WHSXL 2 x WHS90 WHSRJK WHSLXX

ACCESSORIES	MIDI	LARGE	EXTRA-LARGE
 <p>Handrail With integral safety kerbs. Fit to one side or opposite sides. Universal height: 90cm (36ins)</p>	WHS45 45cm (18ins)	WHS60 60cm (24ins)	WHS75 75cm (30ins) WHS90 90cm (36ins)
 <p>90cm Anti-Trip Toe-Plate Provides additional trip protection on the long (90cm) Extra-Large Half-Step sides</p>			WHSTP90
 <p>Doorplate Closes the gap between the Giant Half-Step and the door frame; self-supporting for uPVC frames</p>			WHSDP75 75cm (30ins)
 <p>Height-Extension Kit Extend any Giant Half-Step up to 20cm (8ins) high. Useful for 'building over' existing steps</p>			WHSLXX
 <p>Handrail Joiner Kit Join handrails of any two or more adjacent half-steps (2 pieces)</p>			WHSRJK

Welcome to the all-new Made in Britain Welcome®!

- ▶ Versatile independent access solution
- ▶ Intuitive assembly and fast installation
- ▶ Durable and attractive
- ▶ Cost-effective and reusable



- ▶ Complies fully with Building Regulations Document M for dwellings
- ▶ Order in kits for simple, effective specifying and ordering
- ▶ CAD drawings available for any variation on request

500kg
(79st)

STRENGTH

Built to last, the system has a huge 500kg capacity.

HANDRAILS

Powder coated pre-galvanised steel provides a durable yet 'warm to the touch' handrail.

2 WIDTHS

REGULAR width
90cm (3ft)

or

WIDE width
120cm (4ft)

ADJUSTABLE LEGS

Height-adjustable legs can be adjusted to suit ground variations and a huge range of step heights.

PLATFORM

3 platform sizes available. If a greater size is required, simply join them together.

DOORPLATE

Standard 75cm wide doorplate supplied with every WRB and WRWB system. Optional self-supporting and wide versions also available.

Kit A – Ramp only

Often used to provide access to an existing platform or step. Self-supporting integral doorplate is great for uPVC thresholds.

Kit B – Ramp and Platform

A very popular installation layout, complying with the requirements for a resting platform at the top of a ramp.

Patio Platforms

Suited to a wide variety of scenarios including patio, French and extra-wide doors.

Fast one-person install

Easy to specify and order

100% modular

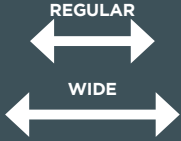
Same-day dispatch

26

What's New?

Now in 2 widths

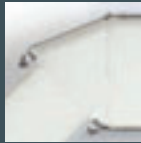
Regular 90cm (3ft) and, Wide 120cm (4ft) (with 10cm (4ins) kerbs)



New accessories

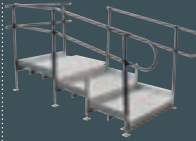


Access hatch



Platform angle extension

Step Kits



Standalone Handrails



3 Easy choices!

1 Easy Width Choice

NEW Welcome® ramps are now available from stock in two widths to meet all requirements.



REGULAR width 90cm (3ft)

The old-time-favourite width, both serviceable and compact. Minimum required width for Building Regulations Document M for Dwellings (England & Wales).



WIDE width 120cm (4ft)

This great addition to the NEW Welcome® range opens up fresh opportunities. Wide ramp kits include the new generous size 150cm (5ft) platform.



2 Easy Handrail Selection

Choose the handrail type based on the required appearance, budget and specific application.

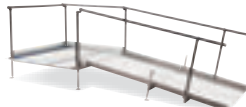
Double Handrails



The best and safest handrail choice

- Double handrails create an effective and reassuring barrier and optional bow ends for users and carers

Single Handrails



Single handrails are a very cost-effective solution for some applications

No Handrails



Ramp kits are available with no handrails

3 Easy Colour Options

NEW Welcome® ramps are available in a full range of carefully chosen and universally appealing colours including the option of Safety Yellow handrails.



Original Graphite



Garden Green



Heritage Brown



Safety Yellow



Garden Green



Heritage Brown



Original Graphite with Safety Yellow handrails

NEW Welcome® Popular Accessory Options

Enhance your NEW Welcome® ramp with these very popular accessories



Welcome® Platform Door Entry Flap

Width: 72cm (28.3ins) Length: 45cm (18ins)

- WPEF12** 122cm platform side
- WPEF15** 150cm platform side
- WPEF18** 180cm platform side

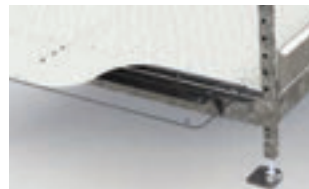


Self-Supporting Doorplate

Avoids threshold fixings – no more cracked uPVC frames

Upgrade Kits

Self-supporting upgrade kit only (excludes doorplate).
For use with 75cm doorplates supplied with kits.
For WRB REGULAR width ramp kits **Code: WRBSD8**
For WRWB WIDE width ramp kits **Code: WRWBSD8**



NEW Welcome® Platform Angle Extensions

Universal for REGULAR 90cm or WIDE 120cm ramp widths and any size platform side.

30 degrees angle:

- WPRE30-E** (Double Handrails)
- WPRE30-C** (Single Handrails)
- WPRE30-A** (No Handrails)

45 degrees angle:

- WPRE45-E** (Double Handrails)
- WPRE45-C** (Single Handrails)
- WPRE45-A** (No Handrails)



Access Hatch



WPRAH

For ramps or platforms (43 x 66cm); requires cutting/drilling to fit.

Soft-Ground Leg Bearer

For grass, flower beds, gravel, etc.



Long **WRLB** 15 x 3.8 x 120cm (6 x 1.6 x 48ins)
Short **WRLBS** 15 x 3.8 x 30cm (6 x 1.6 x 12ins)

Bow End



Add optional bow end accessories for additional comfort, safety and enhanced appearance.
WRBE (one side)
For colour options add suffix to product code.

Welcome® Platform Gate



WPGATE
Available in Original Graphite and Garden Green colours.
For colour options add suffix shown opposite.

NEW Welcome® - Step Kits



Your benefits:

- ▶ Totally configurable and adjustable with just 4 main step components
- ▶ Handrail and colour options
- ▶ Building Regulations Document M compliant
- ▶ Build over/straddle existing steps

Choice of step tread (going) for all applications including walking-frame and rollator use.

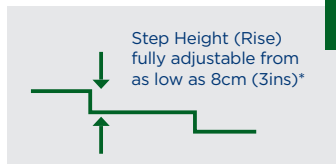


Essential safety benefits:

- ▶ Even step heights and closed risers
- ▶ 10cm high side kerbs
- ▶ Consistent handrail height
- ▶ Self-draining
- ▶ Max. component weight less than 5kg (11lbs)

Specifications:

- ▶ Step height 8 - 17cm (3.2 - 6.7ins)
- ▶ 500kg (79st) capacity
- ▶ Height up to 85cm (33.5ins)



Standalone Step and Landing Kits

Your benefits:

- ▶ **REGULAR** 90cm or **WIDE** 120cm width
- ▶ Fully self-supporting doorplate
- ▶ Supplied with wall brackets
- ▶ Top landing options



Specifications:

- ▶ Overall width: regular 98cm (38.6ins)
- ▶ Overall width: **WIDE** 128cm (50.4ins)
- ▶ Doorplate: 75 x 17cm (30 x 6.7ins)

Kit height range:

- ▶ 1 step kit 8 - 17cm (3.2 - 6.7ins)
- ▶ 2 step kit 16 - 34cm (6.3 - 13.4ins)
- ▶ 3 step kit 24 - 51cm (9.5 - 20.1ins)
- ▶ 4 step kit 32 - 68cm (12.6 - 26.8ins)



(Optional landing increases max. height range by 1 riser. Add 8 - 17cm/3.2 - 6.7ins)

NEW Welcome® - modular ramp & step system

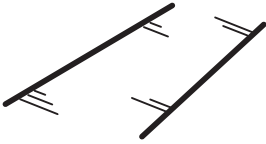
NEW Welcome® - Standalone Handrail Kits

Safe and easy access all the way

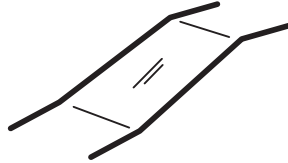


One kit for all applications:

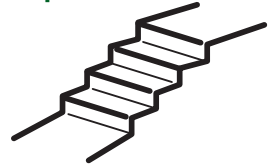
Paths



Slopes



Steps



Fast, easy installation

- ▶ No cutting/no Hot-Work on site
- ▶ No gluing or riveting
- ▶ 4-way height and angle adjustment
- ▶ Join seamlessly to Welcome® Ramps and Steps handrails



A solution for every application

- ▶ Choose any mounting option – wall-mount, base-fix, concrete-in or face-fix
- ▶ Join kits with elbows, straight connectors or corner post
- ▶ Handrail, mid-rail and bow end options
- ▶ Telescopic length adjustment option
- ▶ Colour options

High specification convenience!

- ▶ Fully galvanised steel with high-build Polyester Powdercoat finish
- ▶ Complete ready-to-go kits, components or bulk packs



Easy Colour Options

NEW Welcome® handrails are available in a full range of carefully chosen and universally appealing colours including the option of Safety Yellow handrails.



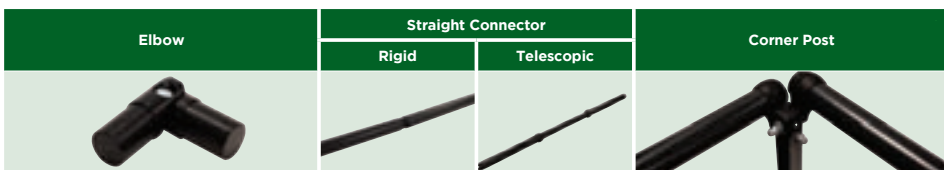
Choose any mounting option



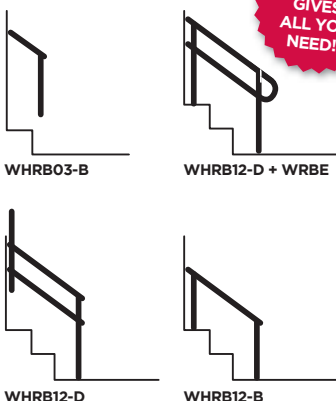
Handrail, mid-rail and Bow End options



Simply join kits together as required



Standalone Handrail Example Kits/Codes



ONE CODE GIVES ALL YOU NEED!!

Standalone Handrail Kit Codes

	Length	Uprights	Double Handrail	Single Handrail
Wall-Mount	30cm (1ft)	-	-	WHRW03
	60cm (2ft)	-	-	WHRW06
	120cm (4ft)	-	-	WHRW12
	180cm (6ft)	-	-	WHRW18
	240cm (8ft)	-	-	WHRW24
Base-Fix	30cm (1ft)	1	WHRB03-D	WHRB03-B
	60cm (2ft)	2	WHRB06-D	WHRB06-B
	120cm (4ft)	2	WHRB12-D	WHRB12-B
	180cm (6ft)	3	WHRB18-D	WHRB18-B
	240cm (8ft)	3	WHRB24-D	WHRB24-B
Con-crete-In	30cm (1ft)	1	WHRC03-D	WHRC03-B
	60cm (2ft)	2	WHRC06-D	WHRC06-B
	120cm (4ft)	2	WHRC12-D	WHRC12-B
	180cm (6ft)	3	WHRC18-D	WHRC18-B
	240cm (8ft)	3	WHRC24-D	WHRC24-B
Face-Fix	30cm (1ft)	1	WHRF03-D	WHRF03-B
	60cm (2ft)	2	WHRF06-D	WHRF06-B
	120cm (4ft)	2	WHRF12-D	WHRF12-B
	180cm (6ft)	3	WHRF18-D	WHRF18-B
	240cm (8ft)	3	WHRF24-D	WHRF24-B

NEW Welcome® - modular ramp & step system

Contact us for full range of accessories, options and upgrades

Budget Portable Folding Ramp



- ▶ Made in Britain for improved quality and reduced carbon emissions
- ▶ Increased availability; avoiding long distance shipping delays
- ▶ Strong but lightweight with full-length hinge
- ▶ Budget-friendly and easy-to-use, overcoming everyday obstacles
- ▶ Suited to wheelchairs, scooters, rollators and pedestrians



Code	Length	Weight	Capacity	Stored Dimensions L x W x D
Width: 72cm (28.3ins)				
MFR06	60cm (2ft)	4.4kg (9.7lbs)	300kg (47st)	60 x 37 x 7.6cm (23.2 x 14.6 x 3ins)
MFR09	90cm (3ft)	6.8kg (15lbs)	300kg (47st)	90 x 37 x 7.6cm (35.4 x 14.6 x 3ins)
MFR12	120cm (4ft)	9.1kg (20lbs)	300kg (47st)	120 x 37 x 8.6cm (47.2 x 14.6 x 3.4ins)
MFR15	150cm (5ft)	11.5kg (25.3lbs)	300kg (47st)	150 x 37 x 8.6cm (59.1 x 14.6 x 3.4ins)
MFR18	180cm (6ft)	13.9kg (30.6lbs)	300kg (47st)	180 x 37 x 8.6cm (70.7 x 14.6 x 3.4ins)
MFR21	210cm (7ft)	16.3kg (35.9lbs)	275kg (43st)	210 x 37 x 8.6cm (82.7 x 14.6 x 3.4ins)
MFR24	240cm (8ft)	18.7kg (41.1lbs)	250kg (39st)	240 x 37 x 8.6cm (94.5 x 14.6 x 3.4ins)

Adjustable Wedge Ramp

Your benefits:

- ▶ New patented design
- ▶ Quick and easy adjustment in 1 inch (2.5cm) increments
- ▶ Unobtrusive design with high grip surface
- ▶ Great for indoor and outdoor use



Code	Min. Height	Max. Height	Length	Capacity	Weight
Width: 74cm (29ins)					
MAW10	5cm (2ins)	10cm (4ins)	43cm (16.9ins)	275kg (43st)	6.5Kg (14.3lbs)

Adjust height for thresholds from 5cm to 10cm high

Telescopic Channel Ramps

Code (Pair)	Min. Length	Max. Length	Capacity (Pair)	Weight (Each Half)
Width: 19cm (7.5ins)				
MTR12	75cm (2.5ft)	120cm (4ft)	300kg (47st)	2.5kg (5.5lbs)
MTR15	83cm (2.7ft)	150cm (5ft)	300kg (47st)	3.3kg (7.3lbs)
MTR18	107cm (3.5ft)	180cm (6ft)	300kg (47st)	3.9kg (8.6lbs)
MTR21	120cm (4ft)	210cm (7ft)	300kg (47st)	4.1kg (9.0lbs)



Made in China IMPORTANT: These products may be subject to changes in source, specification, appearance and packaging. Images may not match product supplied. Limited 12 month warranty

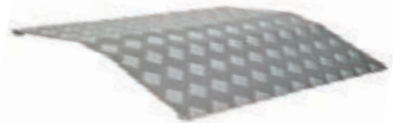
Contract Kerb Type Threshold Ramp

Code	Length	Max. Recom. Height	Capacity	Weight
Width: 70cm (27.5ins)				
MMT5	50cm (20ins)	10cm (3.9ins)	300kg (47st)	3kg (6.6lbs)



Contract Bridge Type Threshold Ramp

Code	Length	Height	Capacity*	Weight
Width: 70cm (27.5ins)				
MBR4	50cm (19.7ins)	4cm (1.6ins)	300kg (47st)	3kg (6.6lbs)
MBR6	58cm (22.8ins)	6cm (2.4ins)	250kg (39.4st)	3.3kg (7.3lbs)
MBR8	75cm (29.5ins)	8cm (3.1ins)	250kg (39.4st)	5.4kg (11.9lbs)
MBR10	100cm (39ins)	10cm (3.9ins)	250kg (39.4st)	7.6kg (16.8lbs)



*Capacity assumes ramp rests on threshold

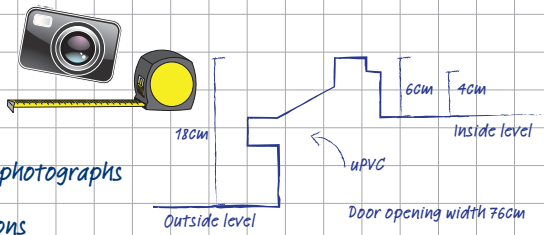


Installed Ramp Gallery



TOP TIPS!

1. Refer to Ramp Specifier Guide (p2/3)
2. Always take close-up and stand-back photographs
3. Make a rough sketch and add dimensions



Most of the products listed carry a comprehensive 2-year warranty for normal use, conditions apply. Use other than published/intended will void the warranty.



Enable Access, AccessCentre, Aerolight, ExitMaster, RampCentre, Permaramp, The Butterfly Ramp and Metro Mobility are registered trademarks of Enable Access (Holdings) Ltd. Welcome, Rollout-Trackway, Doorline, Ultralight, High Rise and Quickrails are trademarks of Enable Access (Holdings) Ltd. These and all other product names, codes and images must only be used in reference to products supplied by Enable Access. We undertake a policy of continual review and research, which may lead to changes in product appearance and specification. Information is given for guidance only: customers take ultimate responsibility for purchasing decisions. Aerolight ramps are designed and optimised for disability/mobility type use - for other applications, please speak to a RampCentre product advisor. All dimensions, weights and conversions are approximate for your easy reference only and specific risk assessments (including all manual handling assessment and product use issues) should be carried out prior to the use of the equipment supplied. Stated capacities apply for the combined weight of mobility devices and/or passenger/attendant. For technical help and details of your nearest stockist phone 020 8275 0375. © Copyright Enable Access Ltd.

- Established 1998
- Multiple patented products
- Largest range available from stock
- Exported worldwide



Leading Ramp and Access innovation



Helping you
“Get Ramps Right!”



For more details contact

